



UNIVERSITY OF
FLORIDA

EXTENSION

Institute of Food and Agricultural Sciences

Growing Concerns

Editor - Dave Palmer

News & Information for Horticulture Service Professionals

Oct - Nov - Dec 2001

Hillsborough County Extension Service
5339 S. CR 579, Seffner FL., 33584
(813) 744-5519 fax (813) 744-5776

Contents

FNGA Annual Auction
Trade Associations
Spanish Language Resources
UF Horticulture Degree at HCC
Economic & Business News
Ongoing Legal Issues
Top Dressing with Rubber??
Asian Cycad Scale
Made for the Shade
The Invasion Continues
Congratulations
Commercial Equip't for Homeowners??
Environmentally Friendly Fern
Pesticide Potpourri
Ball Moss Research
Cicada Killers
New / Interesting Publications
Calendar of Events
Interesting Websites

The Institute of food and Agricultural Sciences is an Equal Employment Opportunity - Affirmative Action Employer authorized to provide research, educational information and other services only to individuals and institutions that function without regard to race, color, sex, age, handicap or national origin. Cooperative extension works in agriculture, home economics, state of Florida, IFAS, University of Florida, US Dept of Agriculture, and Boards of County Commissioners cooperating. Funding for the duplication of this publication is provided by the Hillsborough County

Don't Miss This Event!

The FNGA Annual Plant Auction

Once a year the members of the Florida Nurserymen and Growers Association donate plants to raise money for their Youth Activities and Scholarship Fund. This is your chance to:

Purchase plants, shrubs, trees, groundcovers, annuals, perennials, hanging baskets, potting soil, fertilizer, pruning equipt, pesticides, sprayers

AT WHOLESALE

...(OR LOWER)

WHEN - Friday Oct 19, 2001

WHERE - Florida State Fairgrounds

(Free Parking -

Use the Orient Rd entrance)

Details:

Bring Money!

"I don't make jokes. I just watch the government and report the facts."

- Will Rogers (1879 - 1935)

Just An Opinion - Trade Associations

Dave Palmer

What do you know about the following situations? (Many of these issues have been covered in the pages of *ProHort*.)

The St Johns fertilizer regulations	The Wellington fertilizer regulations
Limits or complete bans on blowers	Insect & disease quarantines
Licensing regulations and issues	Environmental regulations and issues
Water restriction regulations	Invasive plant regulations
Bans or limits on plants shipped into or out of the state	
The trend toward 'Best Management Practices'(BMP's) in all industries	
Pesticide pre-application notifications ranging from 24 hours to many days	

Most of the above situations involve city, county or state agencies. The rule in government is to hold open discussions on issues before enacting or changing regulations. That allows anyone, whether the general public or those affected by the changes, to make their voice heard.

It seems that the number of environmentally sensitive, legal or regulatory horticulture situations is increasing daily. Each one of the issues above has the potential to affect business owners in the professional services industries. Each issue can affect your livelihood, your business and ultimately your income.

Do you believe that the politicians and policy makers truly understand each side of every issue and how it will affect all the parties involved? Not likely. Like the rest of us, they have too much to do and too little time to do it. In many of the situations above, they are responding to a vocal minority. They need help understanding the impact of the proposed changes on the rest of the industry.

Do you think that your opinion doesn't matter because you only have one voice? One of many good reasons to join an association to create a strong voice.

Who will take the time to provide the policymakers with an understanding of the other side of the issues? The industry trade associations, if they truly represent the industry should be taking the lead on issues that affect the industry.

Do you know what you can do about each of these situations to support one side or another? Do you understand the issues? Do you know how any decision the policy makers create will affect your industry? Do you have time to keep up with all the issues? This is where a good association can earn the money you pay for membership.

Some industries vulnerable to these or other situations (notably the pesticide industry and the wholesale growers) have learned from experience that it pays to be aware of these and similar situations.

Some of the vulnerable industries have learned to cooperate, to find their voice, to gather a little political muscle, to voice their concerns appropriately and to negotiate when necessary. In Florida, several of the organizations related to pesticide application have joined together to form the Florida Professional Applicators Alliance.

Some of these industries have learned to be proactive, that is to foresee upcoming

problems and propose their own solutions before the solutions of others are imposed upon them.

The issues noted above will not go away. The professional horticulture service industries and associations cannot continue to poke their heads in the sand and pretend to be unaffected or to believe that the problems will go away. The associations need to wake up and address the challenges ahead.

What's the first step? The first thing is to educate yourself about the issues. What issues does your industry face? Which issues could have the biggest impact on your industry? Which are the biggest threat? Who are the players? How would you like to see the issue resolved?

Do you belong to an association? If not, who is looking out for you and your industry?

If you do belong to an association, are they keeping up with these issues? Again the question is -- if not the association, then who is looking out for your industry?

How do you choose an association to belong to? Whichever association understands and caters to your particular industry. Whichever one understands the issues facing your particular industry and is willing to be involved, go to the meetings and discussions and propose legislation if necessary. Whichever one is willing to take action.

Which is better - a local, state or national association? No clear answer here. While national associations can have more political muscle and resources, will they fight for local issues? If local associations have the will to fight for local issues, do they have the resources? Sometimes belonging to more than one association is the answer.

What questions do I ask to find out the answers to those questions? Call the association, ask for copies of recent newsletters. See what issues the association is concerned about, if any. Call the leaders of the local chapter or the state leaders. Ask what the association is doing to keep up with and deal with issues that are important to you. Do they have a legislative committee to keep up with the issues? Do they meet with policy makers and legislators to engage in ongoing discussions? Are they part of the problem or part of the solution?

The following is a partial list of professional horticulture service associations.

ALCA - American Landscape Contractors Assoc - <http://www.alca.org/>

AMCA - American Mosquito Control Assoc - <http://www.mosquito.org/>

ANLA - American Nursery and Landscape Association - <http://www.anla.org/>

CPCO - Certified Pest Control Operators - <http://www.cpcoofflorida.org/>

FAPMS - Fla Aquatic Plant Mgmt Society - <http://www.homestead.com/fapms/main.html>

FMCA - Fla Mosquito Control Assoc - <http://www.floridamosquito.org/>

FNGA - Florida Nurserymen & Growers Assoc - <http://www.fnga.org/> FPRA - Fla Park & Recreation Assoc - <http://www.frpa.org/>

FTGA - Fla Turfgrass Assoc - Florida Turfgrass Association

GCSAA - Golf Course Superintendents Assoc of America - <http://www.gcsaa.org/>

ISA - Florida International Society of Arborists - <http://www.floridaisa.org/>

LMA - Landscape Maintenance Assoc - <http://www.floridayards.com/cgi-bin/Home.pl>

STMA - Sports Turf Managers Association - <http://www.sportsturfmanager.com/default.asp>

Spanish Language Resources

The Illinois Landscape Contractors Association (ILCA) has just released a four-part interactive language tutorial in both English and Spanish aimed specifically at the landscape industry. The package includes an interactive CD, 5 audio tapes, a set of 252 illustrated flash cards and a phrase dictionary. The tutorial was developed in cooperation with the University of Illinois. The set costs \$302.06 for non-members. For further information visit ILCA's website at <http://www.ilca.net/> and go to 'Publications.' Or you can call 630-472-2851.

Did You Know...?

That the *ProHort* website (<http://prohort.ifas.ufl.edu/index.htm>)has information and links on how to submit samples for diagnosis and testing of soil pH and nutrients, nematodes, and disease. Also included are information on how to submit plants and insects for identification. Simply click on the "Diagnostic Services Available" link on the bottom right corner of the homepage.

"We had a quicksand box in our backyard. I was an only child... eventually."
- Steven Wright

UF to Offer Degree at HCC Plant City

Starting in the Spring, you'll be able to work on a degree in Environmental Horticulture without leaving Hillsborough County. The degree program, called distance learning education, will take place at the Plant City Campus of Hillsborough Community College in cooperation with the University of Florida. The class in the spring will probably be offered as distance education. Two faculty and 4 staff are scheduled to offer classes by summer and an equal number of personnel will be added each of two more years. Other enhancements of the University's presence are being planned to make Plant city a recognized and important part of the IFAS system. For more info call Fred Webb at HCC at 813-757-2104.

Economic & Business News

Suncoast Greenhouses of Seffner is shutting down after 18 years. The company which produces plugs and vegetative starter material, has more than 250,000 sq ft of greenhouses and 50 employees. Factors involved include the **economic slowdown and the 3 year drought.** (Source: Tampa Bay Chapter of FNGA and GMPRO greEn-mail for Aug 21, 2001)



A recent study by the **University of Illinois** says that in 1999, the product and service sectors of the Illinois green industry generated nearly \$2.9 billion. **This figure places the green industry ahead of corn production in its importance to the state's economy.** The University of Florida is currently working on a survey of the horticulture industry in Florida. It promises to be the most accurate yet. (Source: *Lawn and Landscape Magazine, March, 2001*)

Did You Know...?

The July issue of Landscape Management magazine listed the **50 largest landscape service companies**. Congratulations to the following Florida companies that made the cut:

- #6 - OneSource Landscape & Golf Services - Tampa
- #16 - Vila & Son Landscaping - Miami
- #29 - Tropics North - Miami
- #30 - Nanak's Landscaping - Orlando
- #36 - Keller Outdoor - Sandford
- #43 - Dora Landscaping Co. - Apopka



Ongoing Legal Issues

The 2000 report from the California Air Resources Board says more than **20 communities** in California **have enacted bans or restrictions on gas-powered, 2-stroke blowers** and another **80 communities have ordinances restricting usage, noise levels or both.** Time use restrictions or bans on blowers are being considered in Boulder, Colorado and Phoenix, Arizona.

Vancouver, British Columbia in Canada, has decided to **ban blowers by 2004.** In the meantime a bylaw that goes into effect this fall will only allow the use of blowers from October to January and even then **no closer than 50 meters (164 feet) from any residential building.** (Editors Note: *If such a law were to be passed in any typical community in Florida, it would effectively ban blowers from residential neighborhoods.*) (Source: *Lawn & Landscape online newsletter for Aug 22, 2001*)

Photo courtesy of Stihl

Delray Beach, Florida is considering an ordinance **requiring lawn workers** to decontaminate themselves when leaving a property. The proposed requirement is in line with DACS

recommendations to reduce the spread of the canker bacteria. Some Broward County cities are considering similar requirements. Nearly 590,000 citrus trees have been removed and destroyed in South Florida to prevent the disease from spreading. **The proposed Delray ordinance would require, among other things, that vehicles and equipment be cleaned with steam.** (Source: *Lawn & Landscape online newsletter for Mar 27, 2001*)

At the end of June, the **Canadian Supreme Court** unanimously ruled that Canadian **municipalities have the right to restrict the residential use of pesticides.** The

Thought for the Day:

Advice is free.

The right answer will cost plenty.

court case involved Hudson, a suburb of Montreal, which in 1991 became the first Canadian municipality to outlaw the use of pesticides on lawns. More than 30 other Quebec towns including the city of Halifax, Nova Scotia have enacted similar bans. (Source: *Lawn & Landscape online newsletter for July 9, 2001*)

Houston may restrict the use of lawnmowers and other lawn tools as it tries to end its distinction as the nation's smog capital. Currently under consideration are **limits on the use of power equipment from 6am until noon from April through October**. The state has until the end of the year to meet to submit an acceptable plan to meet federal clean air standards or risk losing highway funding and curtailed industrial development. (Source: *The Weekly Dirt for Sept 26, 2001*)

Riverside County, California officials **banned sewage sludge as fertilizer** (Milorganite, etc). While the EPA supports the use of biosolids, it asked the national Academy of Sciences to review potential health risks. (Source: *Weekly NMPRO e-mail for Aug 14, 2001*)

Did You Know...

...that the Southern Nevada Water Authority has started to offer homeowners money - 40cents / sq ft to replace all or part of their lawn with less water dependent plants. Other states, including New Mexico, California and Arizona have instituted similar financial incentive plans to save water. (Source: *Time Magazine at www.time.com for July 9, 2001*)

"Opportunity may knock only once, but temptation leans on the doorbell." - Anonymous

Top Dressing With Rubber ???!



Got any old tires laying around? UF researcher Grady Miller has some ideas on how to recycle them. Grind them up and spread them on high-wear areas of athletic fields and golf courses. The ground up tires, also known as crumb rubber, could help increase the durability of turf in high-traffic applications. Miller is testing out the rubber product on turf plots on the UF campus, a Gainesville golf course and several athletic fields.

In one method, several compounds including the crumb rubber are being spread evenly over the top of the grass in a process known as top-dressing. In another process called aerification, small holes are punched in the ground and fill with one of the test compounds. In both processes, the products work their way down into the soil where they may deliver the strongest protective benefit. More research is needed before any conclusions are reached. (Photo by Eric Zamora,

University of Florida/IFAS) (Source: *UF/IFAS News Release at http://news.ifas.ufl.edu/print/2001/01_0618.html*)

Experience is something you don't get until just after you need it.

We've been through so much together, and most of it was your fault. - Ashleigh Brilliant

Asian Cycad Scale Video

Channel 28, one of the local TV stations, did a 3 minute piece on the spread of the Cycad Scale in the Tampa Bay area on Aug 3 of this year. The Central Florida Palm and Cycad Society (CFPCS) has put the video on their website. It is a good informative piece. I would also suggest other systemic insecticides such as Cygon or Orthene and also horticultural oil and malathion and oil. On normal scale, 2 treatments 7-10 days apart usually solve the problem. Joseph Ayo of CFPCS, says this is NOT normal scale and that repeated treatments are necessary and even then, not always completely effective. Always check the label to make sure that either the plant or the pest is on the label. See the CFPACS website at <http://cfpacs.com/>

Some other good links:

UF's Featured Creatures -

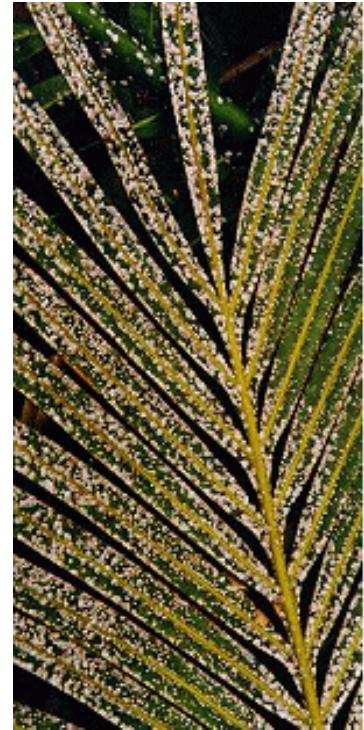
http://creatures.ifas.ufl.edu/orn/palms/cycad_scale.htm

Fairchild Tropical Gardens -

http://www.ftg.org/horticulture/n_cycadscale.html

DACS Cycad Scale website -

<http://doacs.state.fl.us/~pi/enpp/ento/aulacaspis.html>



Heavily infested sago.
Photo courtesy of
Fairchild Tropical Garden

Made For the Shade?

In the latest issue(July-August 2001) of *Florida Turf Digest* by FTGA (Fla Turfgrass Association), Dr Laurie Trenholm reports on the latest research on the **shade tolerance of several cultivars of St Augustine**. Although Bitterblue was included in the study, other researchers have said that a pure Bitterblue strain no longer exists. The other problem with Bitterblue is availability. The other varieties tested were Seville, Palmetto, Floratam and a new variety being prepared for release (again unavailable). The unavailable cultivars will not be considered in this article. The grasses were subjected to **4 different shade levels - 0% (full sun) 30% (light shade), 50% (moderate shade) and 70% (moderately deep shade) for 7months**. Visual scores were given for overall quality, color and density. The results indicate that for all grasses, the quality either stayed the same or improved slightly in 30% shade compared to the 0% shade (full sun). In nearly every case, Seville had the best performance under varying levels of shade, Floratam had the worst performance under the same conditions and Palmetto nearly always fell between the two. For all the grasses, more than 50% shade caused quality to deteriorate and for shoot growth to slow rapidly. The bottom line is that **while St Augustine turf will tolerate a little shade, it will also deteriorate rapidly as the shade deepens**.

"I had some eyeglasses. I was walking down the street when suddenly the prescription ran out." - Steven Wright

The Invasion Continues

A UF entomologist and researcher, Rudy Scheffrahn, has identified a **new species of termite** in Dania Beach. The new termite, described as "ant-like in appearance." Rudy says **the pest is arboreal** (nests and forages at or above the soil surface). By contrast, typical subterranean termites build nests below ground and look whitish in color. Although it's not as destructive as the Formosan "super termite" now spreading throughout the Southeast, the new wood-feeding pest is capable of causing widespread damage in above-ground structures. the species is *Nasutitermes costalis* and probably found its way to Florida on a ship from an island in the Caribbean where it is a common pest. The termite is so new there is no common name yet for the pest. (Source: UF/IFAS release http://news.ifas.ufl.edu/print/2001/01_0621.html)

DACS' Division of Plant Industries announced the discovery of a **new exotic spider mite** infesting *Ptychosperma* palms and crotons. It is considered a potentially serious plant pest. (Source: *Pest Alert* 4/24/01) For more info see the website: <http://doacs.state.fl.us/~pi/enpp/ento/eutetranychus.html>

Asian Tiger mosquitos, *Aedes albopictus*, known to carry Dengue fever and encephalitis, were **discovered in June at Los Angeles Harbor** and at an L.A. wholesale nursery in containers of imported *Dracaena sanderiana*, referred to a 'lucky bamboo.' A county health officer said this is the first time the mosquito has been found on the west Coast. (Source: *GMPRO greEn-mail* for July 17, 2001)

Congratulations Joe Parr and OneSource

Joe Parr is employed by OneSource as assistant project manager at Busch Gardens in Tampa. His article "Employing Summer Interns at OneSource" was featured in the July 2001 issue of *Lawn and Landscape* magazine. OneSource runs an internship program that hires talented student for the summer from universities with strong horticulture programs. The program has proved to be a resource both for the students and for Busch Gardens, the jobsite for the program. Congratulations to OneSource for creating a win-win situation and congratulations to Joe for a great article. (Source: *Lawn and Landscape Magazine*, July 2001)

Did You Know...

...that the projected percentage of 2001 acres planted to genetically modified crops is as follows: cotton - 64%, soybeans - 63%, corn - 24% (Source: *Chemically Speaking*, July 2001)

Commercial Equipment for Homeowners?

Visitors to this year's International Lawn, Garden and Power Equipment Expo in Louisville July 20-22 couldn't help but notice new products aimed at a variety of residential buyers. Manufacturers at Expo formally recognized a trend that had been developing for some years, which is **high-end consumers with large properties buying commercial equipment**. In response, manufacturers such as Textron and Simplicity have developed new lines of mowers that look and feel commercial, yet are targeted for the high-end residential buyers. These are the same buyers who make sure they have commercial

stoves and refrigerator in their homes. Apparently, price is not a sticky issue for these dedicated homeowners, since some of these riders retail in the \$5,000 to \$8,000 range. "Actually, most of these buyers have been finding us," admitted one manufacturer. "They either find our equipment at the dealer or see it on a landscape contractor's truck and want the same quality for themselves." That manufacturer estimated nearly 1/4 of its rider sales were to homeowners. (Source: *Landscape Management: Newsletter - May 11, 2001*)

Have You Seen the *ProHort* Website Lately?

25 Newsletters of 10+ pages, 275 documents and links to documents on specific topics, nearly 150 links to other useful websites, links to soil, insect, disease and nematode diagnostic and ID information, water restriction info links, pesticide licensing and CEU information and links, and a "Business Survival Guide." Check it out at: <http://prohort.ifas.ufl.edu/index.htm>

Environmentally Friendly Fern... Or New Business Opportunity?

Scientists may have a powerful new tool for clearing soil of deadly arsenic - one that comes not from a laboratory, but from the great outdoors. According to a report published today in the journal *Nature*, the brake fern, *Pteris vittata*, soaks up arsenic from contaminated soils with incredible efficiency.



Lena Ma of the University of Florida, a specialist in trace metal chemistry, and her colleagues discovered brake fern growing on an arsenic-contaminated site in Central Florida. Of 14 species analyzed from the site, only the brake fern exhibited the large amounts of the carcinogenic heavy metal. Indeed, the fern frond arsenic concentration measured up to 200 times higher than that found in the surrounding soil.

Currently, some 400 plants are known to accumulate toxins. Many are used in a small but growing phytoremediation market estimated to be climbing from a range of \$16.5 million to \$29.5 million in 1998 to a range of \$214 million to \$370 million by 2005, according to published reports.

Because the fern accumulates 90 percent of the arsenic in its fronds and stems, the strategy would be to grow the plant on toxic sites, then harvest the fronds and stems - its "above-ground biomass" - and transfer them to a designated hazardous waste facility.

(Sources: *Scientific American Website* - <http://sciam.com/news/020101/3.html> , *Daily University Science news* - <http://unisci.com/stories/20011/0201016.htm>)

Pesticide Potpourri

Riverdale Chemical Company has requested the deletion of drainage ditchbanks use from their **Turf Weed and Brush Control** label. (Combo of 2,4-D and 2,4-DP)

Southern Agricultural Insecticides has requested deletion of lawn and turf uses from their **SA-50 Lawn, Ornamental & Vegetable Flowable Fungicide** label. (Chlorothalonil)

Nufarm requested deletion of drainage ditchbanks (aquatic non-food) and sugarcane uses from their **Weedone LV4** herbicide (2,4-D isooctyl ester)

EPA issued an Experimental Use Permit to **Syngenta Crop Protection** for evaluation of **a new termite barrier (Impasse)**. The Impasse system consists of a multi-layered polymer sheet containing the active ingredient lambda-cyhalothrin, which is placed beneath the foundation of a new house. (Source: *Chemically Speaking*, July 2001)

Ball Moss Research

Allen Owings, a researcher at Louisiana State University recently did some research on controlling ball moss. Ball moss (*Tillandsia recurvata*) is classified as a "structural parasite. That means it does not extract water or nutrients from the host. Typical recommendations to control ball moss usually include copper fungicides such as Kocide. After Allen heard that sodium bicarbonate (household baking soda) could also control ball moss, but no research was available, he decided to do the research. Tests were run using both 2.5% and 5% (weight per volume). Both concentrations were used both with and without horticultural oil. In the article, Allen says "Field tests confirmed the effectiveness of 2.5% and 5% sodium bicarbonate sprays for killing ball moss." Treated plants turned dark brown or black and died within 3 to 5 days of application. Allen recommends using the lower concentration during the summer. (Editors Note: *The problem that I see is that sodium bicarbonate off the grocery store shelf is not labeled as a pesticide. That makes it illegal to use as a pesticide. If anyone knows of an EPA registered product using sodium bicarbonate, please contact me at dkpalmer@mail.ifas.ufl.edu or 813-744-5519x103 so I can pass the information on to the industry*) (Source: *Ornamental Outlook*, August 2001)



Ball moss. Photo courtesy of Treemasters

Cicada Killers

Several calls have come in lately concerning HUGE wasps called Cicada killers. These wasps hunt annual cicadas and are active from mid-in July to mid-September. They drag paralyzed cicadas to their burrow where the female lays an egg. In spite of their size, they have a weak sting and pose little threat to people unless disturbed For more info see the links at



Cicada Killer

<http://www.culver.edu/Homepages/Faculty/Jcoelho/sphecus.htm>

and <http://www.uky.edu/Agriculture/Entomology/entfacts/misc/ef004ci2.htm>

**"A word to the wise ain't necessary- it's the stupid ones who need the advice."
- Bill Cosby**

Send me your e-mail address.....!!

...you'll receive a notice when newsletters are published, and stay current with breaking industry news & developments.

Send your e-mail address to: dkpalmer@mail.ifas.ufl.edu.

Finally, Some Good News

Researchers at the Agricultural Research Service (ARS) have found **two parasitoid wasps that have the potential to control the papaya mealybug**. The mealybug has the potential to attack a variety of agricultural crops including papaya, citrus, cotton and avocado, in addition to ornamentals. These tiny wasps are almost invisible, with one species just about 1 millimeter long (4/100 of an inch) and look like the average stinging wasp. **Called the 'mealybug destroyers'**, the females sting the mealybugs and lay an egg inside each one. When the eggs hatch, the larva eat the mealybugs from the inside out. The researchers have reared and released the wasps in the Caribbean are seeing a tremendous impact. (Source: *ARS News Service, Aug 17, 2001*)

ARS researchers have developed a new technique for rearing an Australian weevil that feeds on the melaleuca tree. A technique was developed, including an artificial diet to rear the weevil in mass. The right combination of sucrose, glucose, cornstarch, vitamins and minerals ensure the weevil's survival from hatch through the pupal stage. The artificial-diet-reared weevils have already been released in melaleuca-infested sites and seem to be performing well. (Source; *ARS News Service for Dec 19, 2000*)

Georgia IPM Specialist Julie Henderson say **applicators who use Bt (*Bacillus thuringiensis*)** can increase it's effectiveness by paying attention to the time of day the product is applied and noting the pest's life stage. **Bt remains active longer if applied late in the day, during the evening or on cloudy days**. The younger the insect is, the more effective the Bt is likely to be. (Bt is a microbial insecticide specifically toxic to caterpillars) (Source: *Weekly NMPRO e-mail for July 3, 2001*)

New (or Interesting) Publications

Nematode Management in Home Lawns - <http://edis.ifas.ufl.edu/NG039>

CD Prices Reduced

The University of Florida has reduced the prices of several pest-related CD's:

Mcricket - Alternative Methods of Mole Cricket Control has been reduced from \$25 to \$10 **Wood Bug - Pests and Beneficials of Southern Ornamentals** has been reduced from \$30 to \$20 **Pests in and Around the Home** has been reduced from \$50 to \$30 For details go to: <http://pests.ifas.ufl.edu/software/>

New Flash Cards Available

Dr Ann Chase and Mike Zemke have two new laminated card sets available: **Plant**

Problems - covers problems with 30 different interior plants with 64 color pictures with information on the back \$20 **Bedding Plant Problems** - common diseases

and disorders of 30 different plant species with 100 color photos and information \$20. See the website at www.chaseresearchgardens.com

The Color Encyclopedia of Ornamental Grasses - Rick Darke, 325 pgs, 507 color photos \$49.95

Ornamental Palm Horticulture Tim Broschat & Alan Meerow, 336 pgs, 110 color photos, \$39.95

Calendar of Events

Oct 1 - Pesticide Testing Polk County 9am call 863-533-0765 reservations.

Oct 2-3 - FACTS 2001 - Ag, Landscape & Irrigation Trade Show Call 407-678-5337

Oct 9 - Pesticide Testing Hillsborough County (9:00am - 2nd Tuesday of the month) 813-744-5519.

Oct 12 - Bill Phagan's MoneyMaker Workshop - Clearwater - 813-961-2149

Oct 17 - Pesticide Testing Pinellas County 9am sharp, Call Paula at 582-2456 for reservations.

Oct 30 - 2001 Industry Update for Nursery and Greenhouse Growers - Cairo Ga For more info call 229-386-3416

Oct 31 - 2001 Industry Update for Landscape, Nursery & Greenhouse - Tallahassee For more info call 229-386-3416

Nov 1 - 2001 Industry Update for Landscape Nursery & Greenhouse - Jacksonville For more info call 229-386-3416

Nov 5 - Pesticide Testing Polk County 9am call 863-533-0765 reservations.

Nov 6 - Pesticide Testing Hillsborough County (9:00am - 2nd Tuesday of the month)

Nov 9-13 - Green Industry Conference - Tampa

Nov 30 - Dec 1 - Great Southern Tree Conference, Gainesville, Contact Heather Nedley at 1-800-375-3642

Dec 3 - Pesticide Testing Polk County 9am call 863-533-0765 reservations.

Dec 11 - Pesticide Testing Hillsborough County (9:00am - 2nd Tuesday of the month)

Feb 22, 2002 - Tree & Landscape Short Course, Tampa, Florida State Fairgrounds, 813-744-5519

Feb 22-24, 2002 Tampa Spring Expo, Tampa, Florida State Fairgrounds, Contact the Tampa Bay Wholesale Growers 813-655-1914

Interesting Websites

The **UF Extension Bookstore** has a new web address - <http://ifasbooks.ufl.edu/>

The **Internet Center for Wildlife Damage Management** by the University of Nebraska - Lincoln - <http://wildlifedamage.unl.edu/>

New address for **Featured Creatures** - <http://creatures.ifas.ufl.edu/>

Citrus Canker Info in English and Spanish -

<http://doacs.state.fl.us/~pi/canker/index.htm>

Official Web Page of the Central Florida Palm and Cycad Society - <http://cfpacs.com/>

Grasshoppers of Florida - <http://entnemdept.ifas.ufl.edu/ghopper/ghopper.html>

UF / IFAS news release on Termite Baits -

<http://extlab7.entnem.ufl.edu/pestalert/gcb-0414.htm>

Alien Empire - companion to the PBS mini-series on insects-

<http://www.pbs.org/wnet/nature/alienempire/>

DO YOU KNOW SOMEONE THAT MIGHT LIKE OR NEED TO READ THIS NEWSLETTER?

Name _____ E-mail? _____

Home Address _____

City/State _____ Zip Code _____

Store Number or
Business Name _____ Fax # _____

Commercial Newsletter

Or subscribe by going to <http://prohort.ifas.ufl.edu/index.htm> click on "Newsletters"

Name _____ E-mail? _____

Home Address _____

City/State _____ Zip Code _____

Store Number or
Business Name _____ Fax # _____

Commercial Newsletter

Or subscribe by going to <http://prohort.ifas.ufl.edu/index.htm> click on "Newsletters"

Name _____ E-mail? _____

Home Address _____

City/State _____ Zip Code _____

Store Number or
Business Name _____ Fax # _____

Commercial Newsletter

Or subscribe by going to <http://prohort.ifas.ufl.edu/index.htm> click on "Newsletters"

Name _____ E-mail? _____

Home Address _____

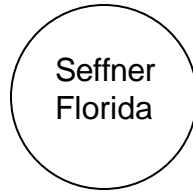
City/State _____ Zip Code _____

Store Number or
Business Name _____ Fax # _____

Commercial Newsletter

Or subscribe by going to <http://prohort.ifas.ufl.edu/index.htm> click on "Newsletters"

Hillsborough Extension Service
5339 S. County Road 579
Seffner, Fl., 33584-3334



Non-Profit Org.
US Postage Paid
Permit # 15